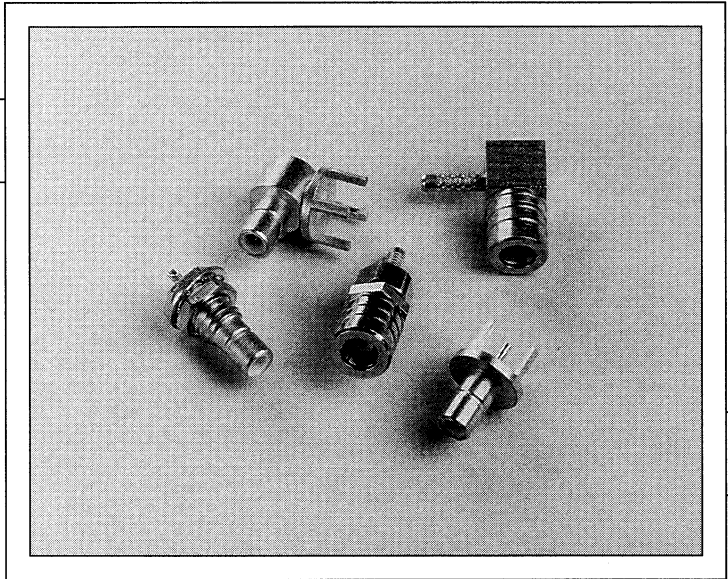


**Subminiature Connectors**



SMB connectors are an excellent solution for space-limited applications to 4 GHz and feature a rapid connect/disconnect engagement. This product line features straight and right angle configurations in all popular cable groups as well as in printed circuit board mounting.

**SMB Subminiature Connectors**

<b>SMB 09 Series</b> .....	158
Specifications .....	159
Interface Drawings .....	160
Product Data .....	161-165
Mounting Hole Dimensions .....	166

# SMB 09 SERIES

**SPECIFICATIONS SUBJECT TO CHANGE WITHOUT NOTICE**

## MECHANICAL

MATERIALS	PLATING
Bodies and Male Contacts: Brass per ASTM B 16.	Gold per MIL-G-45204.
Insulation: Teflon (PTFE) per ASTM D 1457.	Copper per MIL-C-14550.
Female Contacts: Beryllium Copper per ASTM B 196.	Nickel per QQ-N-290.

## FINISH\* (Add letter to end of part number.)

"C": Body - .000020 Gold over .0001 Copper. Contact - .000030 Gold over .000050 Nickel.
"N": Body - .000200 Nickel. Contact - .000030 Gold over .000050 Nickel.
"H": Body - .000020 Gold over .0001 Copper. Contact - .000050 Gold over .0001 Copper. Non-Magnetic - Residual Magnetism less than 20 Gamma.

## MATING CHARACTERISTICS

Center Contact Pin and Socket per MIL-C-39012.
Center Contact Engagement/Disengagement Forces: Female Contact Insertion Force: 2.5 lbs Max. Withdrawal Force: 1 oz. Min. per MIL-C-39012.
Engagement: Initial 14 lbs. Max., after 500 Cycles, 2 lbs. Min.
Durability: 500 Cycles.

## ELECTRICAL

Impedance: 50 Ohms.	Contact Resistance:
Frequency Range: 0-4 GHz.	Straight Connector 6.0 Milliohms.
Voltage Rating: 335 V RMS.	Right Angle Connector 12.0 Milliohms.
Insulation Resistance: 1,000 Megohms.	VSWR:
Temperature Rating: -85° F to +329° F (-65° C to +165° C).	Straight Connector RG178 Cable or Equivalent 1.30 + .04f(GHz).
DWV:	Straight Connector RG316 Cable or Equivalent 1.25 + .04f(GHz).
RG178 Cable or Equivalent 750 V RMS.	Right Angle Connector RG176 Cable or Equivalent 1.45 + .06f(GHz).
RG316 Cable or Equivalent 1,000 V RMS.	Right Angle Connector RG316 Cable or Equivalent 1.35 + .04f(GHz).
RF High Potential:	Corona Level:
Straight Connector, Solder Pot, 600 V RMS.	RG178 Cable or Equivalent 185 Volts Min.
RG178 Cable or Equivalent 500 V RMS.	RG316 Cable or Equivalent 250 Volts Min.
RG316 Cable or Equivalent 700 V RMS.	RF Leakage: -55 dB Min. at 2-3 GHz.
	Insertion Loss:
	Straight Cable Connector .30 dB Max. at 1.5 GHz.
	Right Angle Cable Connector .60 dB Max. at 1.5 GHz.

## ENVIRONMENTAL

Vibration, High Frequency: MIL-STD-202, Method 204, Condition B.
Shock: MIL-STD-202, Method 213, Condition B.
Thermal Shock: MIL-STD-202, Method 107, Test Condition B at +185° F (+85° C).
Corrosion: MIL-STD-202, Method 101, Test Condition B, 5% Salt Solution.

\* All other components plated to meet environmental requirements.





**SMB 09 SERIES  
SOLDER/CLAMP, CLAMP**

Part Number	A DIA.	Cable	Straight Plug
09-0300-0860*	.089 (2.26)	RG405-M17/133 (.086 S.R.)	
			Solder/Clamp

Part Number	A DIA.	Cable	Straight Jack, Bulkhead
09-1380-0860*	.089 (2.26)	RG405-M17/133 (.086 S.R.)	
			Solder/Clamp See Mounting Data Page, FIG. 2

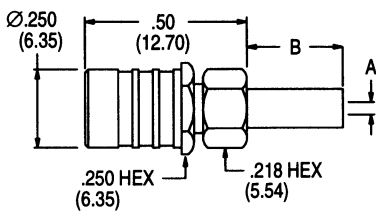
Part Number	A DIA.	B DIA.	Cable	Straight Plug
09-0500-0400*	.040 (1.02)	.081 (2.06)	RG178,196,404	
09-0500-0670*	.067 (1.70)	.111 (2.82)	RG188,316,187,174,179	
09-0500-2670*	.067 (1.70)	.128 (3.25)	RG316 D.S. (M17/152)	
			Clamp	

Part Number	A DIA.	B DIA.	Cable	Straight Jack, Bulkhead
09-1580-0400*	.040 (1.02)	.081 (2.06)	RG178,196,404	
09-1580-0670*	.067 (1.70)	.111 (2.82)	RG188,316,187,174,179	
09-1580-2670*	.067 (1.70)	.128 (3.25)	RG316 D.S. (M17/152)	
			Clamp See Mounting Data Page, FIG. 2	

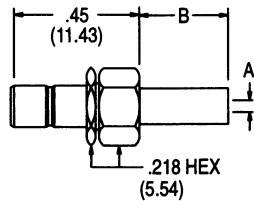
\*See Specification Page for finish suffix.



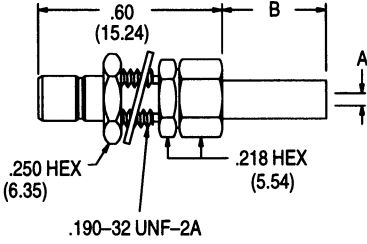
# SMB 09 SERIES CRIMP/CLAMP

Part Number	A DIA.	B	Cable	Straight Plug  
09-0800-0400*	.040 (1.02)	.31 (7.87)	RG178,196,404	
09-0800-0670*	.067 (1.70)	.38 (9.65)	RG188,316,187,174,179	
09-0800-2670*	.067 (1.70)	.38 (9.65)	RG316 D.S. (M17/152)	

**Crimp/Clamp**

Part Number	A DIA.	B	Cable	Straight Jack  
09-1800-0400*	.040 (1.02)	.31 (7.87)	RG178,196,404	
09-1800-0670*	.067 (1.70)	.38 (9.65)	RG188,316,187,174,179	
09-1800-2670*	.067 (1.70)	.38 (9.65)	RG316 D.S. (M17/152)	

**Crimp/Clamp**

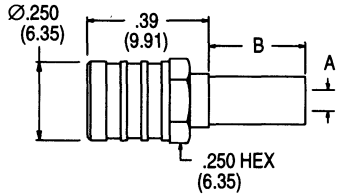
Part Number	A DIA.	B	Cable	Straight Jack, Bulkhead  
09-1880-0400*	.040 (1.02)	.31 (7.87)	RG178,196,404	
09-1880-0670*	.067 (1.70)	.38 (9.65)	RG188,316,187,174,179	
09-1880-2670*	.067 (1.70)	.38 (9.65)	RG316 D.S. (M17/152)	

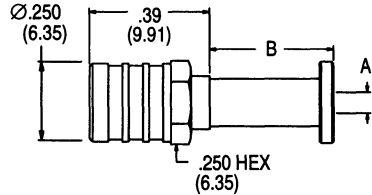
**Crimp/Clamp** See Mounting Data Page, FIG. 2

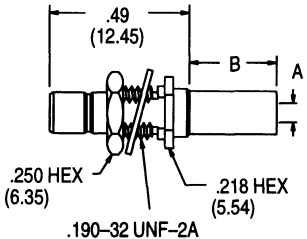
\*See Specification Page for finish suffix.

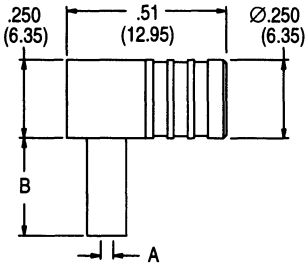


# SMB 09 SERIES CRIMP

Part Number	A DIA.	B	Cable	
09-0800-0673*	.067 (1.70)	.30 (7.62)	RG188,316,174,179	<b>Straight Plug</b>  
<b>Crimp</b>				

Part Number	A DIA.	B	Cable	
09-0800-0677*	.067 (1.70)	.400 (10.16)	RG188,316,174,179	<b>Straight Plug</b>  
<b>Crimp</b>				

Part Number	A DIA.	B	Cable	
09-1880-0673*	.067 (1.70)	.31 (7.87)	RG188,316,174,179	<b>Straight Jack, Bulkhead</b>  
<b>Crimp</b> See Mounting Data Page, FIG. 2				

Part Number	A DIA.	B	Cable	
09-2800-0400*	.040 (1.02)	.31 (7.87)	RG178,196,404	<b>Right Angle Plug</b>  
09-2800-0670*	.067 (1.70)	.38 (9.65)	RG188,316,187,174,179	
09-2800-2670*	.067 (1.70)	.38 (9.65)	RG316 D.S. (M17/152)	
<b>Crimp</b>				

\*See Specification Page for finish suffix.



**THE PHOENIX COMPANY**  
of CHICAGO, INC.

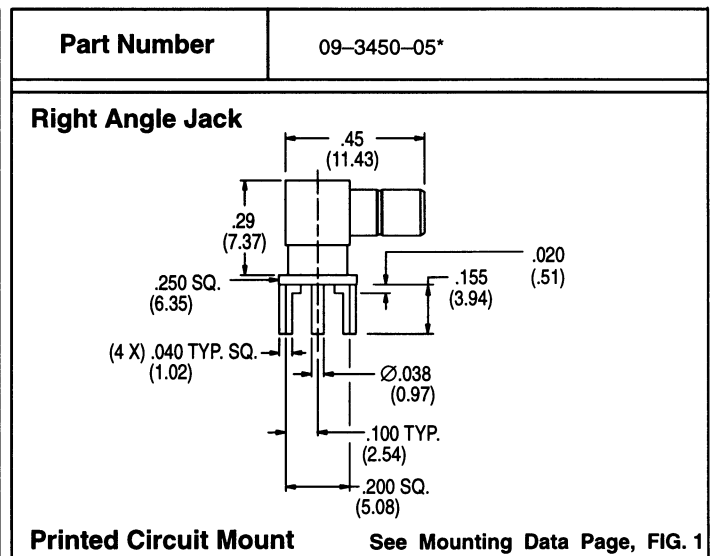
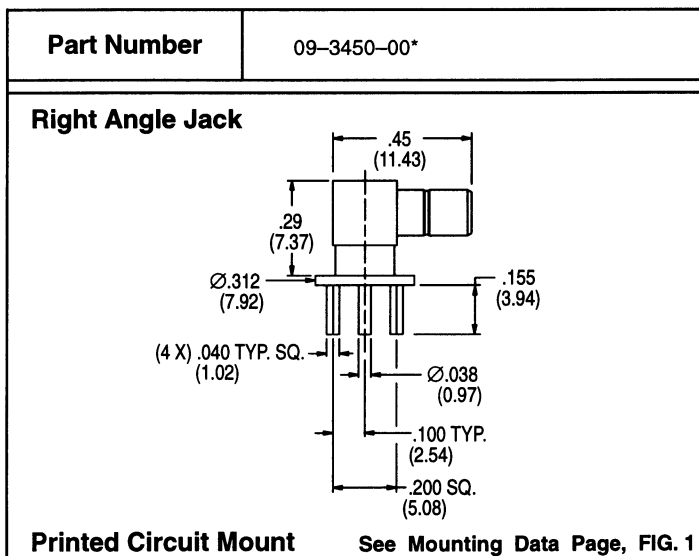
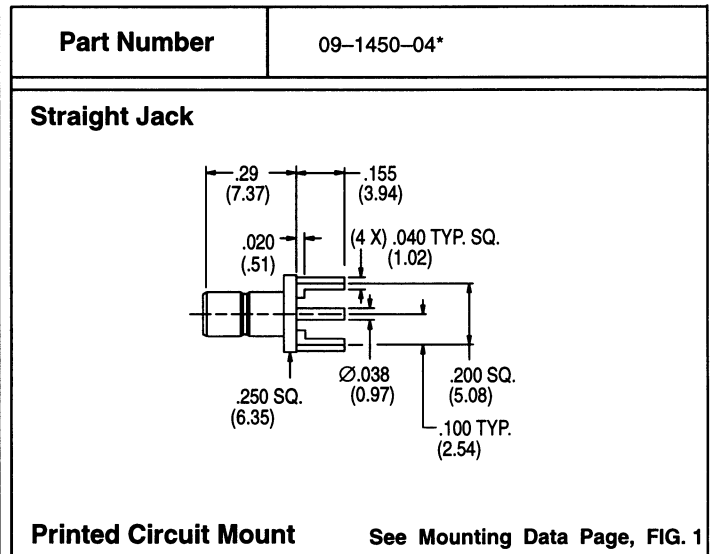
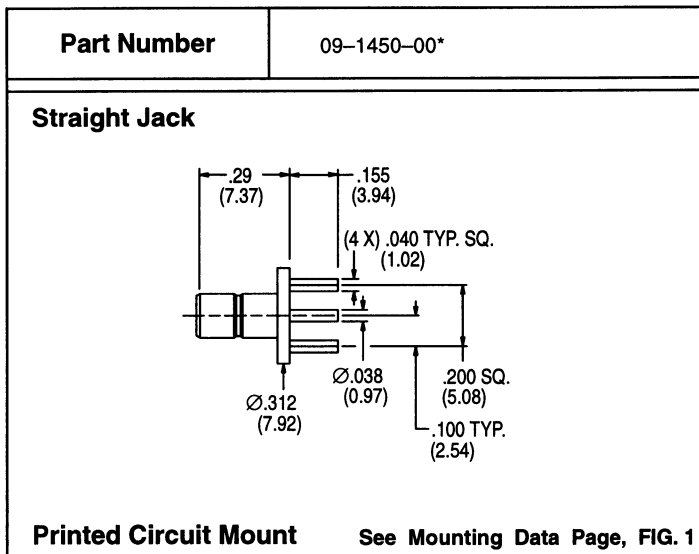
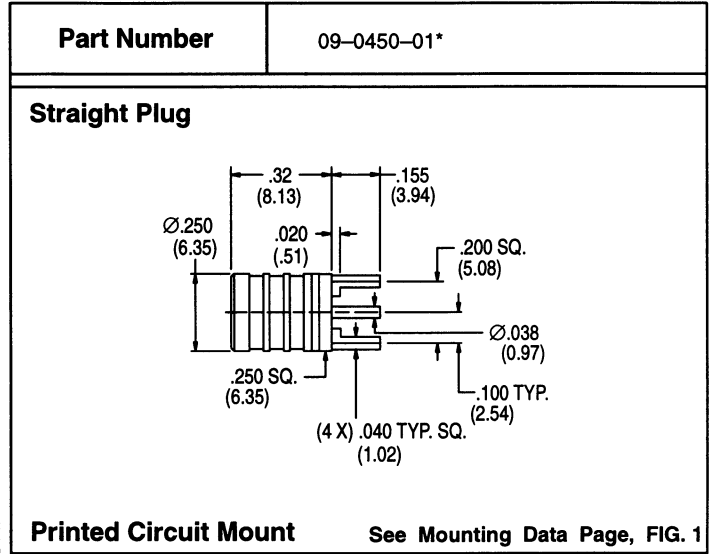
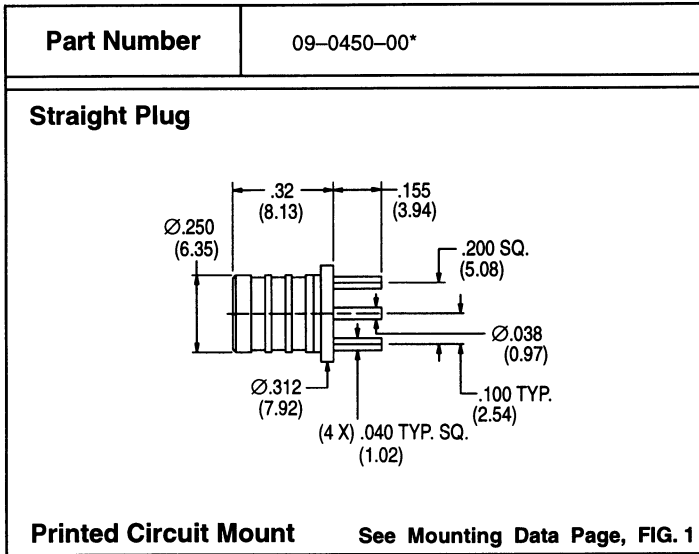
Dimensions are subject to change without notice.

**PALCO CONNECTOR**

A subsidiary of The Phoenix Company

555 Pond Drive • Wood Dale, IL 60191-1192 • Toll Free (800)323-9562

# SMB 09 SERIES PRINTED CIRCUIT MOUNT



\*See Specification Page for finish suffix.



**THE PHOENIX COMPANY**  
of CHICAGO, INC.

Dimensions are subject to change without notice.

**PALCO CONNECTOR**

A subsidiary of The Phoenix Company

555 Pond Drive • Wood Dale, IL 60191-1192 • Toll Free (800)323-9562

# SMB 09 SERIES SOLDER POT, ADAPTERS

<b>Part Number</b>	09-1080-00*
<b>Jack</b>	
<b>Rear Panel Mount</b>	See Mounting Data Page, FIG. 2

<b>Part Number</b>	09-1080-01*
<b>Jack</b>	
<b>Front Panel Mount</b>	See Mounting Data Page, FIG. 2

<b>Part Number</b>	0909-0000-00*
<b>Plug/Plug</b>	
<b>Adapter</b>	

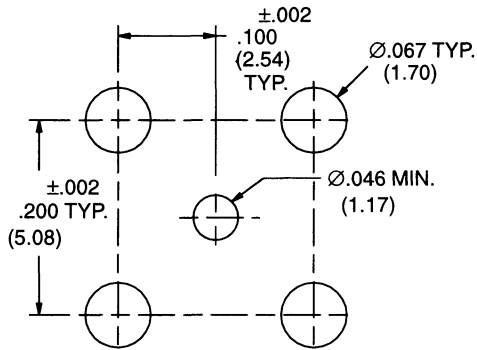
<b>Part Number</b>	0909-1180-00*
<b>Jack/Jack</b>	
<b>Adapter, Bulkhead Mount</b>	See Mounting Data Page, FIG. 2

\*See Specification Page for finish suffix.

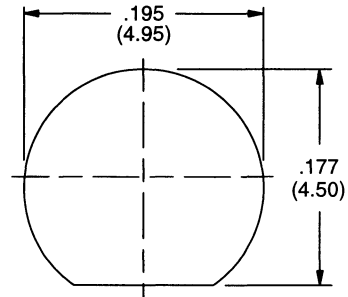


# MOUNTING HOLE DIMENSIONS

**FIGURE 1**

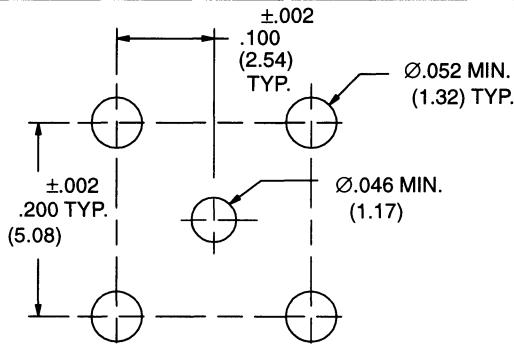


**FIGURE 2**

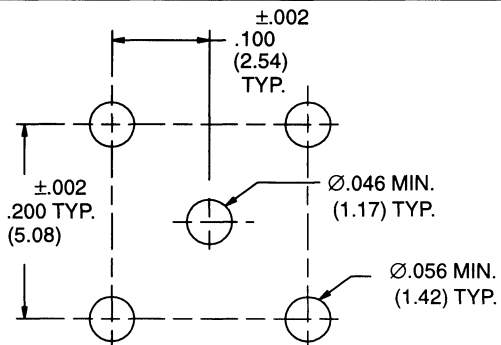


**NOTE: .125 (3.2) MAX PANEL THICKNESS**

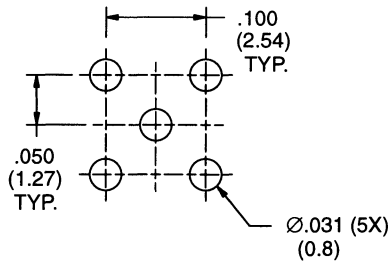
**FIGURE 3**



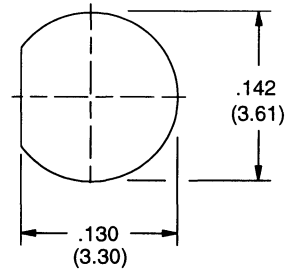
**FIGURE 4**



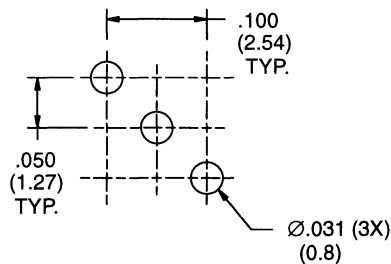
**FIGURE 5**



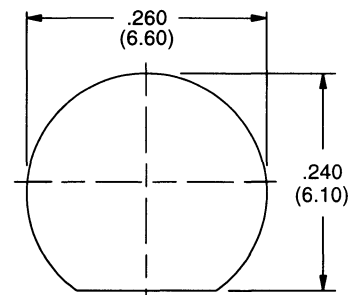
**FIGURE 6**



**FIGURE 7**



**FIGURE 8**



**NOTE: .125 (3.2) MAX PANEL THICKNESS**

